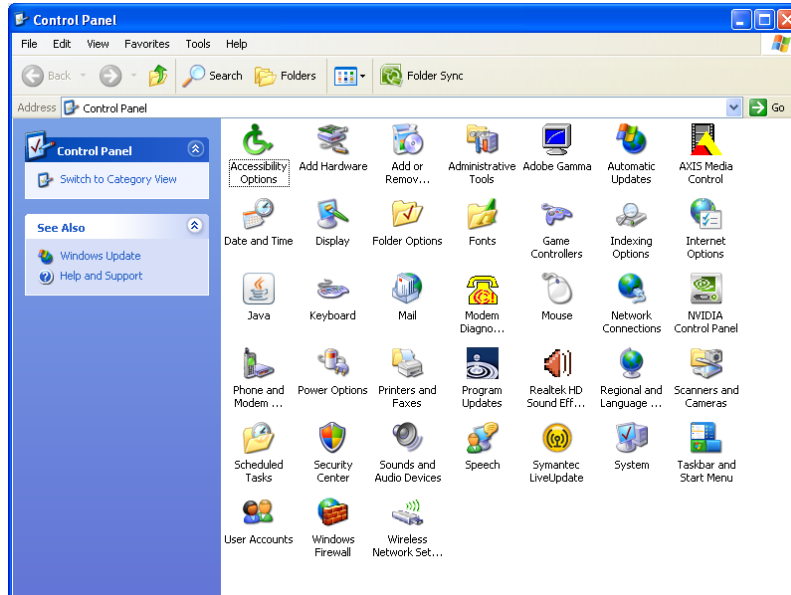
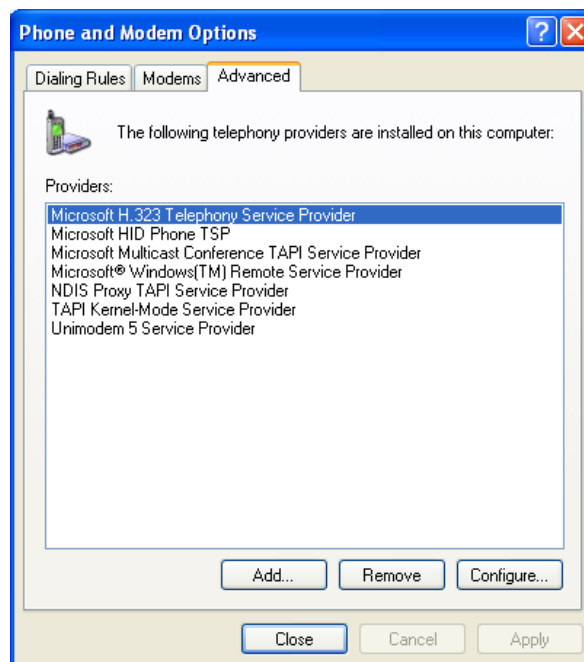


## Adding TAPI Integration into Microsoft Office Outlook 2003

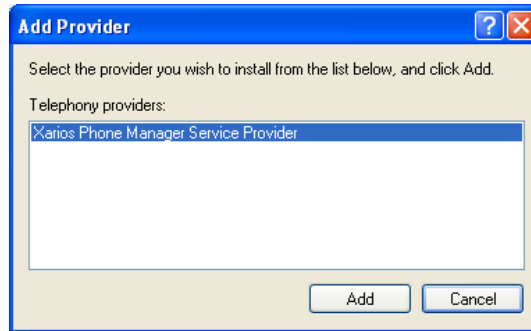
First of all before adding the Xarios TAPI Integration into Outlook the user will need to add the driver into Windows itself. In order to do this the user should first go to the windows control panel:



In here the user should then double click or right click and open 'Phone and Modem Options', which will bring up another window with 3 tabs, the user should then click on the 'Advanced' tab:

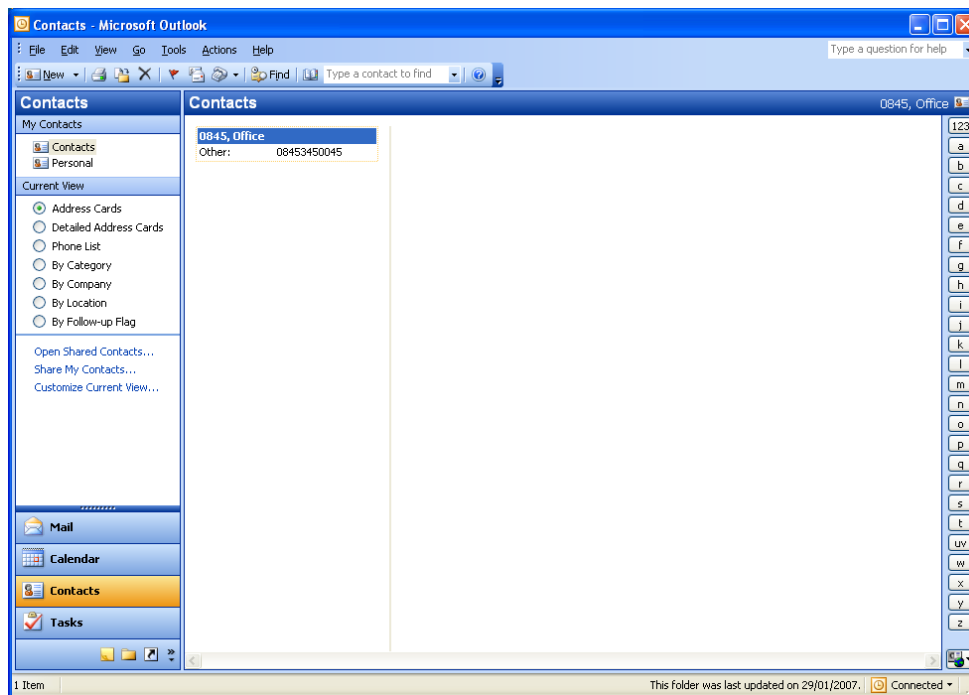



This tab shows all the telephony providers that are installed on the local machine, If the Xarios TAPI driver is not on the list then the user should click the 'Add...' button, this will bring up all the extra available providers the user has on the computer that have not been added as a usable device. In the new window the user should be able to see the "Xarios Phone Manager Service Provider". To add the device, simply click the 'Add' button.

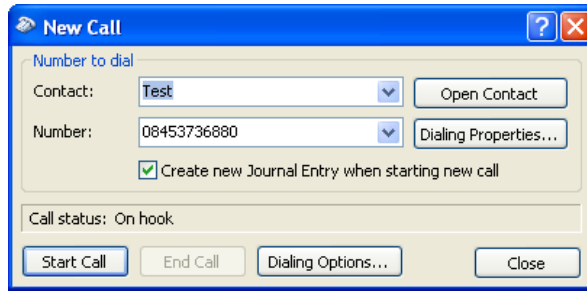


This should now return the user to the previous window for 'Phone and Modem Options' and the "Xarios Phone Manager Service Provider" should now be at the bottom of the list and ready to be used. (Please Note that the Xarios TAPI driver does not need to be configured in any way)

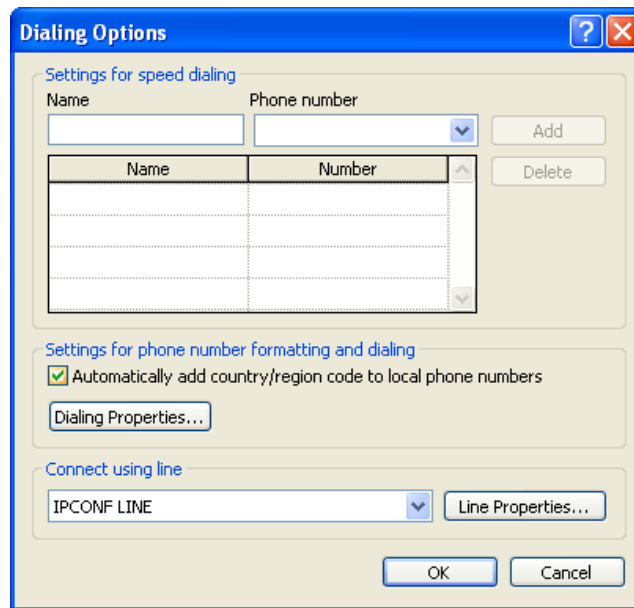
Now that the Xarios Phone Manager Service Provider is added to the local machine, the user can add it into other Applications, in this case Microsoft Office Outlook 2003. To do this, first load up Office Outlook 2003 then go into the Contacts section of the application:



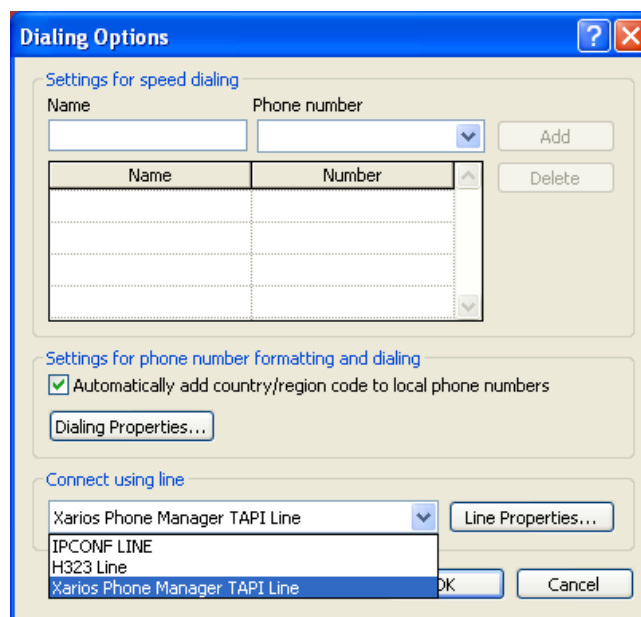
In here all the users' contacts should be stored; the user can now click on one of the contacts once to highlight that contact. Then, along the 2<sup>nd</sup> row from the top there is a phone call button , the user should click this button to bring up a new phone call window, which shows the details of the contact the user has just clicked on:



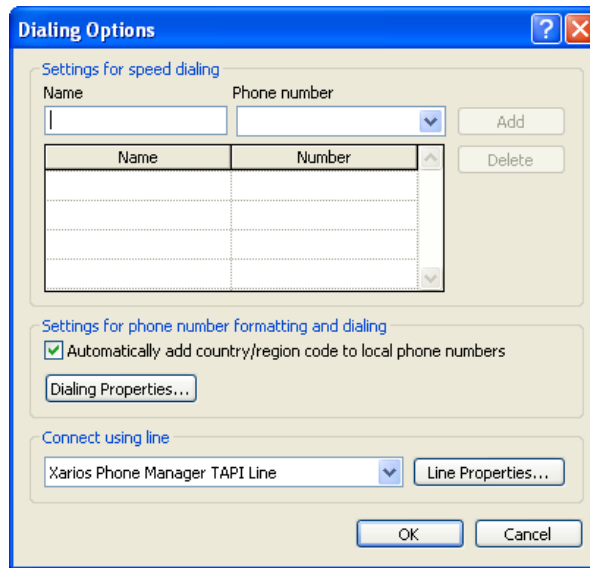
Now in order to add the Xarios TAPI driver to make calls from Outlook the user needs to first click on the 'Dialing Options...' button:



Add the bottom of the window there is a drop down box for the 'Connect using line' option: click on the arrow to bring up the box and select "Xarios Phone Manager TAPI Line".



Once the “Xarios Phone Manager TAPI Line” has been select the user should simply press the ‘OK’ button to save the changes:



This will return the user to the previous ‘New Call’ Window. At this point the TAPI driver is now ready to go and the user can start making calls using the ‘Start Call’ button from this window.

